

TRISHLA CITY

WHERE LIFE BREATHES



Explore the ranked No.1 residential project.

Trishla City stands on 12.77 acres of lush greenery in the new heart of the city, Zirakpur. It offers high rise fully automated apartments with an invincible breathtaking view of nature's green vistas. The development of this architectural prowess is masterfully engineered to adhere to their philosophy of innovation, sustainability and utility that propagates harmonious living. Each embellishment of this project draws its inspiration from modern design and mother nature. Not only this, every home offers private balconies with scenic views creating a constant visual connection with the lush greenery that this project enwraps itself in.



About Trishla Group

Trishla Group is a perfect compound of luxury, nature and comfort. The development of this architectural landmark combines a 17+ years of legacy with masterfully engineered living and commercial spaces. Trishla abides by the philosophy of innovation, sustainability and utility, which makes it a pioneer of real estate properties in the tricity.

Trishla properties are wrapped in absolute serenity, placed in premiumness and surrounded by state of the art amenities. It pampers you for choice with its supreme architectural construction built with Mivan Technology from Malaysia, luxurious yet spacious apartments, and smart spaces located in nature's lap. The brand is committed to timely delivery, class apart facilities, smooth transactions and complete transparency.

A project by
Tricity's
most trusted
builder.

Mr. Harish Gupta

Mr. Harish Gupta is a dynamic visionary driven towards the goal of providing a “home” to his customers. Trust of his buyers is of supreme importance to Mr. Harish Gupta as he believes in working with clean intentions and delivering what he promises. The project Trishla City is his vision and dream, and that is what makes it so special. An avid nature lover who admires green environs, Mr. Harish Gupta considers the residents an extended family which is why he is deeply involved in every aspect of the project. His overarching vision of contributing towards increased standards of living has always been appreciated in the community and awarded with innumerable prestigious awards.







TRICITY'S
ONLY
& OFFICIALLY
RANKED NO. 1
RESIDENTIAL
PROJECT

BY PUDA (GOVT. OF PUNJAB)
& HT. OFFICIAL

WE ARE TRICITY'S
FIRST
WELFARE
RESIDENTS
CERTIFIED BUILDER.

RWA CERTIFICATE



TRISHLA RESIDENT WELFARE ASSOCIATION

We write this letter with great pleasure to the **Trishla Group** and thank them for the extraordinary homes they have given us. From the initial meeting with our sales staff, to working out the negotiations, contracts, structural and interior design, to the speedy construction, quick closing, and the ever efficient follow-up work after moving in; the service provided by you has surpassed my expectations. All the staff at Trishla is immensely professional, knowledgeable, and talented in their field, and have the utmost respect for their clients. Deadlines were met and work was carried out according to schedule, in a most professional way. Also, unlike other housing projects, we were always welcome by the Trishla team, even after possession of the house was handed over, and regular after sale service was provided. The quality of work is evident in the way customers are treated and also by the regular maintenance provided to us, even after charge was handed over the Resident Welfare Association. We are pleased to see that your ethic is of the highest standard. This was our first experience with new construction company, and we were unsure of what to expect of you, but now as we are living in our homes, we put our trust and faith in you for providing the best service possible. Thank you, You made the whole building experience an enjoyable and exciting time in our lives. Your efforts have turned **Trishla Plus Homes** into a community where everyone feels at home. Thank you for helping us fulfill our dreams without any nightmares! We would without hesitation, recommend **TRISHLA GROUP** to anyone who is searching for a new home.


PRESIDENT

TRISHLA PLUS HOME RESIDENTS WELFARE ASSOCIATION
PEERMUCHALLA, ZIRAKPUR
PUNJAB, INDIA

The Ideal Resort Living

Reside in the isle of greenery at Trishla City for a true Resort Living experience. A one of a kind project that draws elements from mother nature and carefully infuses it with modern architecture to construct beautiful spaces for people to come home to.





Pollution free living

Trishla City is an ideal escape for the citizens who wish to live a healthy life in a clean, green and safe environment. Swearing by the notion of providing a habitat in a sustainable environment, Trishla City has been solely developed to contribute towards a greener society. Amidst clean and lush green nature, the project houses over 450 happy families for healthy, sustainable and pollution free life.



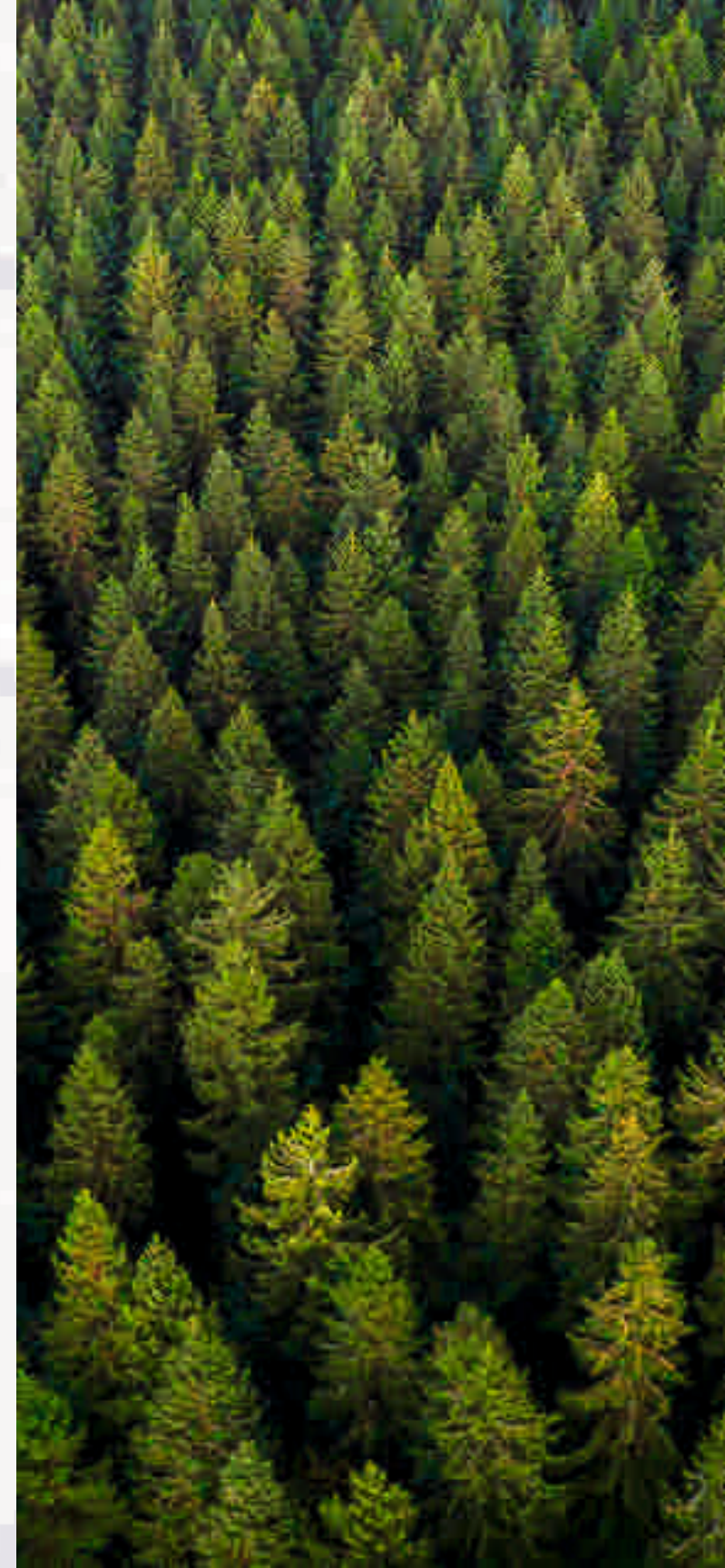


Live amidst

20000

trees and plants

Trishla City is where bespoke living awaits. "A healthy green living can only be enjoyed and experienced if the residents are residing amidst trees which can spawn fresh air", staying true to this belief, Trishla City is an abundance of 20,000 trees and plants.



A Neighbourhood of

450⁺

Happy families

Trishla City is a perfect compound of luxury, nature and comfort that houses 450+ happy families. The project pampers the residents for choice with its supreme architectural construction built with Mivian Technology from Malaysia, luxurious yet spacious apartments, and smart spaces located in nature's lap. With a commitment of timely delivery, class apart facilities, smooth transactions and complete transparency, the buyers and residents enjoy Trishla City as their first choice.



Live Amongst Celebrity Neighbourhood

Lorem Ipsum is simply dummy text of the printing and typesetting industry. Lorem Ipsum has been the industry's standard dummy text ever since the 1500s, when an unknown printer took a galley of type and scrambled it to make a type specimen book. It has survived not only five centuries, but also the leap into electronic typesetting, remaining essentially unchanged. It was

Hasleen Kaur
MISS INDIA (EARTH)

Resident at Trishla City



Digital Homes Satiated in Luxury

The group has always proved to be the trendsetters. With its completely digitalised homes having smart lock apartment doors, electronically operated fittings and fixtures, centralised gas pipelines, 24x7 power back up, automated water supply and many more eco-friendly concepts the group promotes a highly privileged healthy lifestyle.



ACTUAL IMAGE

Constructed with Malaysian Mivan Technology

A project with extraordinary innovation, Trishla City is the first to introduce Mivan Technology from Malaysia in the Tricity City. This fast paced construction technology promises unparalleled strength and durability further ensuring premium yet sustainable finishings of the infrastructures at Trishla City.



Cluster of Amenities

An impressive range of world class

Swimming Pool

Revitalize and unwind at the luxury of your own housing compound.



Gymnasium

Enviably list of recreational facilities that never cease to end.



Workspace

Exclusively dedicated work space to promote high productivity.



Clubhouse

A non exhaustive list of amenities to keep you wanting more.



Jogging Track

Kick start your fitness journey with an in house Jogging Track positioned amidst green gardens.



Meditation Plaza

Rejuvenate your body, mind and soul in peace and serenity.



Outdoor Sports

Take care of your passion and hobbies with a distinctive range of sport facilities.



Theme Gardens

Experience a grandeur of mother nature with beautifully landscaped theme gardens.





Swimming pool



Kids play area



Theme Gardens



Gymnasium



Leisure Garden



Meditation Plaza



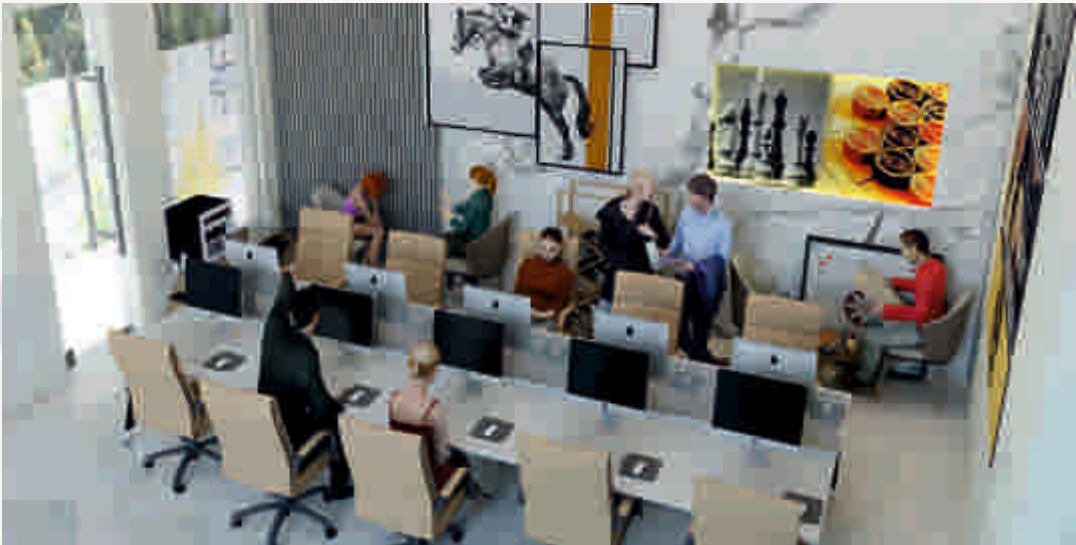
Grand Entrance Reception lobbies in towers



24 x 7 Tight Security



Spaces for Outdoor Sports



Workspaces



Clubhouse



1.5 Kms Jogging Track

Located for Convenience

At Trishla City your home is well linked but is simultaneously 800 meters apart from the hassle, dust and the noise pollution of a highway. Located within an ace of highly developing area with 110 ft wide road this project is situated in the lap of nature nestled in spectacular greenery and peaceful surroundings.



TRISHLA
CITY
WHERE LIFE BREATHES



METRO

10 Mins.



BEST PRICE

10 Mins.



INOX CINEMA

12 Mins.



HOTEL RADDISON

10 Mins.



NABHA SAHIB GURUDWARA

5 Mins.

Our USP's

RESORT LIVING

Embrace the luxury living in the laps of nature as Trishla city sprawls amidst 20,000 trees and plants.

MALAYSIAN MIVAN TECHNOLOGY

State of the art engineering technology being used to stand complete structure with steel and concrete and without any brick or plaster for better longevity.

WORK FROM HOME CONCEPT

To ensure a perfect work environment at the comfort of home, Trishla city offers completely equipped work spaces on the ground floor of each tower.

POSSESSION BEFORE COMMITTED TIME

With an excellent record of on-time delivery of all our projects, we pertain to our legacy of fulfilling the commitment on time without compromising on quality.

MOST TRUSTED BUILDER OF TRICITY

Over a span of 15 years, Trishla Group has emerged as a trusted name in the real estate industry by delivering before the said time line and setting new benchmarks.

AWARDED NUMBER ONE GROUP

Trishla city has been an architectural marvel and self-sustained habitat for more than 450 families and this has earned us the accolade of “No. 1 Group” by the respected jury of GMADA/PUDA.

NEXT GENERATION DIGITAL HOMES

New generation seeks latest technology and to fulfil so, Trishla city has crafted next generation digital homes equipped with Alexa that controls lighting, appliances and much more with just one voice command.

KNOWN FOR AFTER SALES SERVICES

Our vision is to not just sell apartments but make homes and to ensure that, Trishla city offers complete after sales solutions to its residents and assure a quality living experience for ages.

BUILDER IS AVAILABLE 24X7

Harish Gupta, Advocate, M.D. Trishla city, resides happily amongst 450+ families at Trishla city and is approachable round the clock by his fellow residents in case of any urgency.

IMPECCABLE LOCATION

located in a secured zone near Air force station and at a mere drive of 2 mins. from Patiala Highway and 10 mins. away from International airport, Chandigarh, Trishla city offers the most impeccable location.

ULTRA MODERN AMENITIES FOR A CONVENIENT LIVING

LPG Gas pipeline, power back up, swimming pool, swings, sports area, gym, jogging track, service lifts, free shuttle service and much more are in the offering to provide you an unmatched living experience.

FLOOR PLANS

TRISHLA CITY

WHERE LIFE BREATHES

TOWER 5A - 4BHK

LOCATION A SIZE:

2750 sq.ft.

SUPER AREA INCLUSIVE
ONE CAR PARKING



Disclaimer: Dimensions are approximate and the furniture, fixtures and interior items show inside the layout are not the part of standard fittings and chargeable.

TRISHLA CITY

WHERE LIFE BREATHES

TOWER 5A - 4BHK

LOCATION B SIZE:
2750 sq.ft.

SUPER AREA INCLUSIVE
ONE CAR PARKING



Disclaimer: Dimensions are approximate and the furniture, fixtures and interior items show inside the layout are not the part of standard fittings and chargeable.

TRISHLA CITY

WHERE LIFE BREATHES

TOWER 5A - 4BHK

LOCATION C SIZE:

2540 sq.ft.

SUPER AREA INCLUSIVE
ONE CAR PARKING



Disclaimer: Dimensions are approximate and the furniture, fixtures and interior items show inside the layout are not the part of standard fittings and chargeable.

TRISHLA CITY

WHERE LIFE BREATHES

TOWER 5C - 3BHK

LOCATION H SIZE:

2048 sq.ft.

SUPER AREA INCLUSIVE
ONE CAR PARKING



Disclaimer: Dimensions are approximate and the furniture, fixtures and interior items show inside the layout are not the part of standard fittings and chargeable.

TRISHLA CITY

WHERE LIFE BREATHES

TOWER 5C - 3BHK

LOCATION | SIZE:

2000 sq.ft.

SUPER AREA INCLUSIVE
ONE CAR PARKING



Disclaimer: Dimensions are approximate and the furniture, fixtures and interior items show inside the layout are not the part of standard fittings and chargeable.

TRISHLA CITY

WHERE LIFE BREATHES

TOWER 5C - 3BHK

LOCATION J SIZE:

1940 sq.ft.

SUPER AREA INCLUSIVE
ONE CAR PARKING



Disclaimer: Dimensions are approximate and the furniture, fixtures and interior items show inside the layout are not the part of standard fittings and chargeable.

TRISHLA CITY

WHERE LIFE BREATHES

TOWER 5C - 3BHK

LOCATION K SIZE:

2048 sq.ft.

SUPER AREA INCLUSIVE
ONE CAR PARKING



Disclaimer: Dimensions are approximate and the furniture, fixtures and interior items show inside the layout are not the part of standard fittings and chargeable.

TRISHLA CITY

WHERE LIFE BREATHES

TOWER 6A - 3BHK

LOCATION A SIZE:
2021 sq.ft.

SUPER AREA INCLUSIVE
ONE CAR PARKING



Disclaimer: Dimensions are approximate and the furniture, fixtures and interior items show inside the layout are not the part of standard fittings and chargeable.

TRISHLA CITY

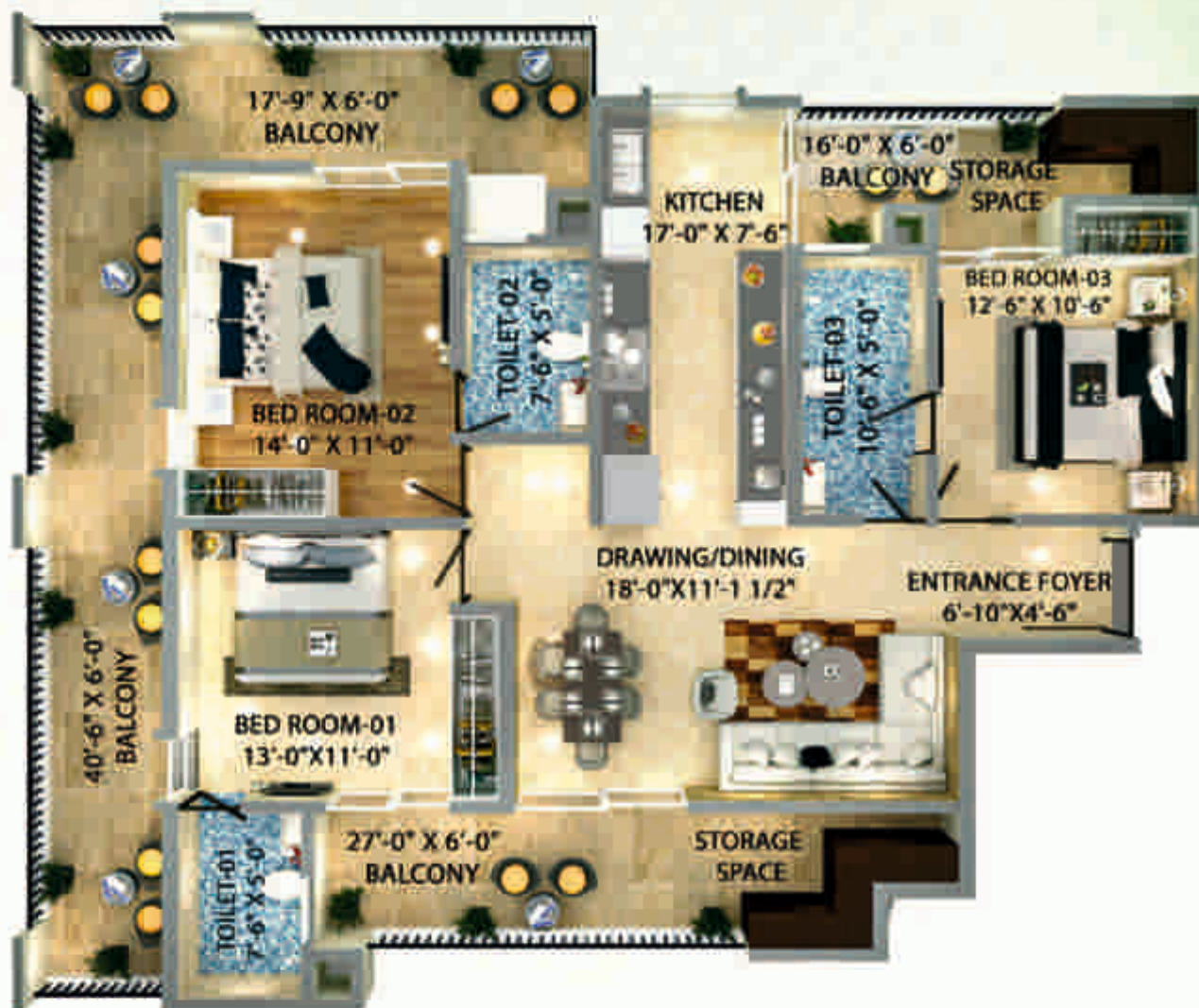
WHERE LIFE BREATHES

TOWER 6A - 3BHK

LOCATION B SIZE:

2048 sq.ft.

SUPER AREA INCLUSIVE
ONE CAR PARKING



Disclaimer: Dimensions are approximate and the furniture, fixtures and interior items show inside the layout are not the part of standard fittings and chargeable.

WHERE LIFE BREATHES

LOCATION G SIZE:

**SUPER AREA INCLUSIVE
ONE CAR PARKING**



Disclaimer: Dimensions are approximate and the furniture, fixtures and interior items show inside the layout are not the part of standard fittings and chargeable.

TRISHLA CITY

WHERE LIFE BREATHES

TOWER 6A - 3BHK

LOCATION D SIZE:

2021 sq.ft.

SUPER AREA INCLUSIVE
ONE CAR PARKING



Disclaimer: Dimensions are approximate and the furniture, fixtures and interior items show inside the layout are not the part of standard fittings and chargeable.

TRISHLA CITY

WHERE LIFE BREATHES

TOWER 6B - 3BHK

LOCATION E SIZE:

2021 sq.ft.

SUPER AREA INCLUSIVE
ONE CAR PARKING



Disclaimer: Dimensions are approximate and the furniture, fixtures and interior items show inside the layout are not the part of standard fittings and chargeable.

TRISHLA CITY

WHERE LIFE BREATHES

TOWER 6B - 3BHK

LOCATION H SIZE:

2021 sq.ft.

SUPER AREA INCLUSIVE
ONE CAR PARKING



Disclaimer: Dimensions are approximate and the furniture, fixtures and interior items show inside the layout are not the part of standard fittings and chargeable.

CLUSTER PLANS



TRISHLA CITY

WHERE LIFE BREATHES

TOWER 5A - 4BHK

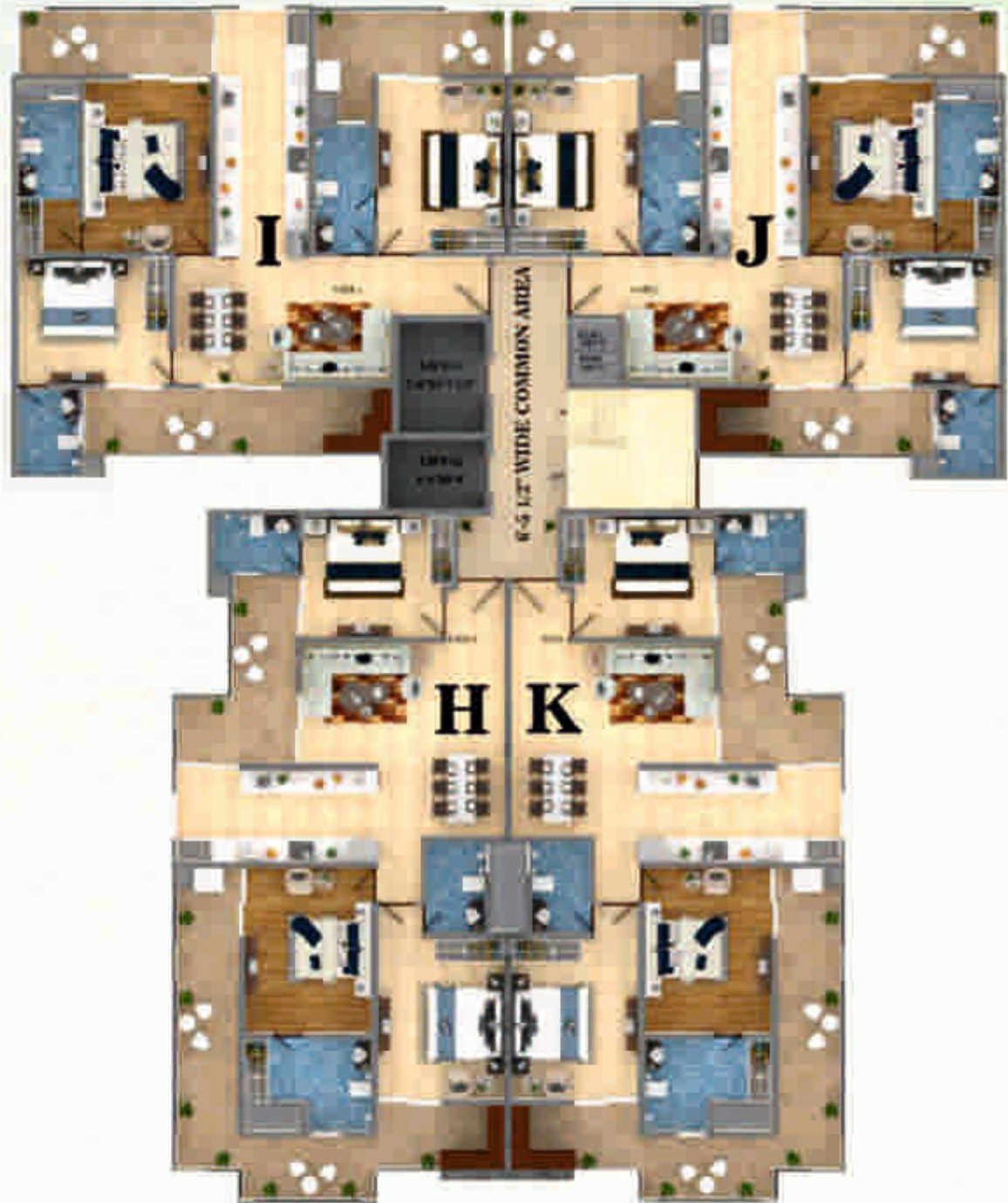




TRISHLA CITY

WHERE LIFE BREATHES

TOWER 5C - 3BHK

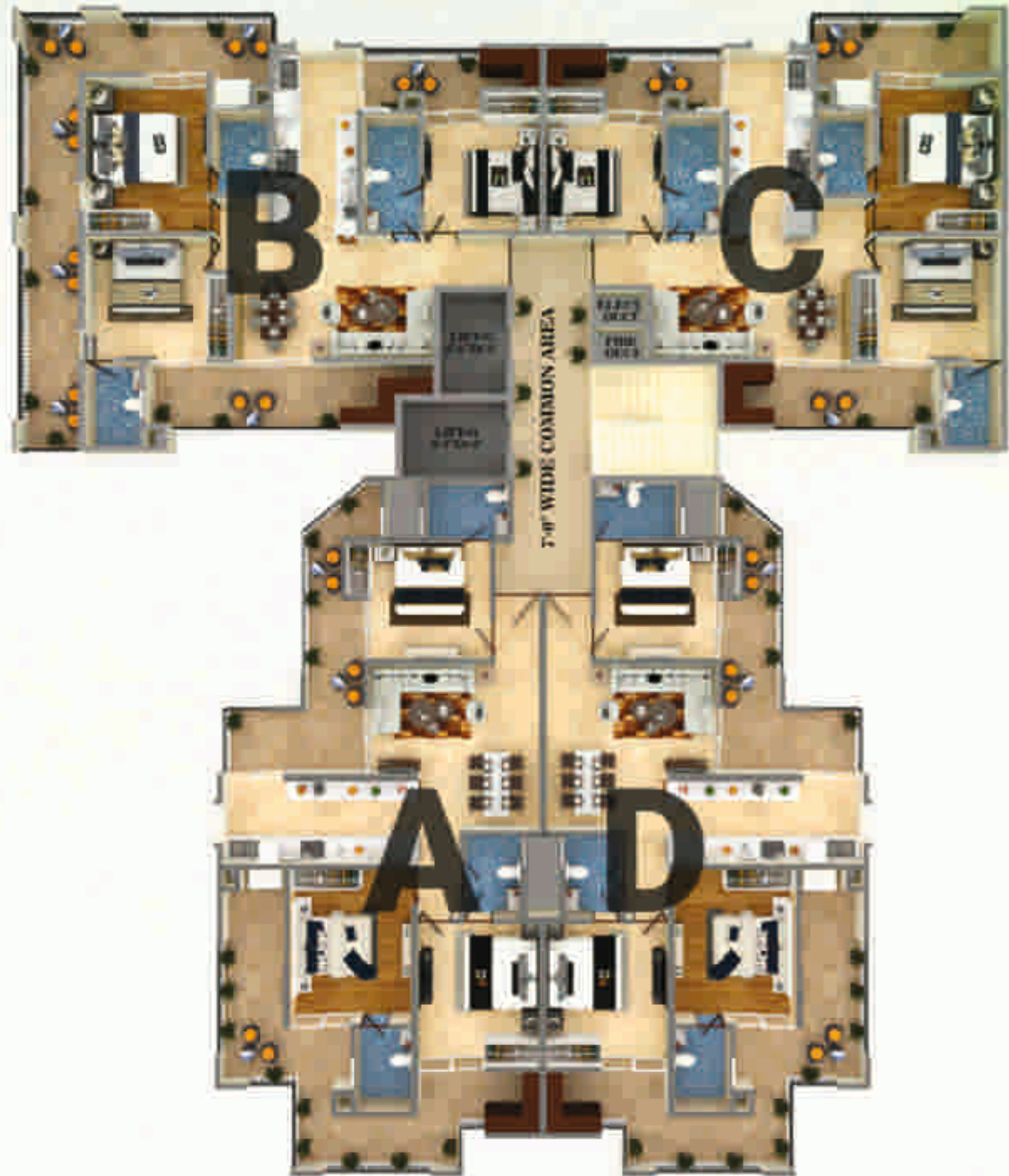




TRISHLA CITY

WHERE LIFE BREATHES

TOWER 6A - 3BHK



RERA Number : PBRERA-SAS79-PR0050

CONTACT:

Website : www.trishlabuilders.com

Address :

Chandigarh - Patiala Highway, High Ground Road,
Zirakpur , Distt. Mohali (PB.) - 140603